

## The Enterprise Integration Backbone (EIBB) Methodology

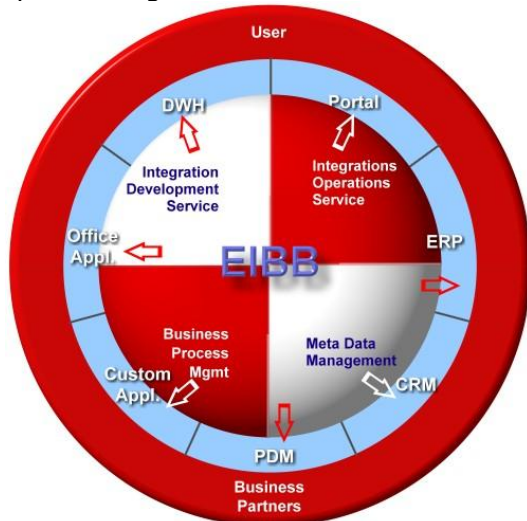
- A concept like the EIBB is required by every enterprise
- Only t2b's methodology supports all steps in the EIBB lifecycle: design, build, use
- Successfully tested and applied in various EAI Projects

The use of integration middleware is spreading fast within companies. In some cases a planned central approach was taken right from the beginning, but in most cases different departments piloted different integration concepts, service architectures and EAI tools.

A company will best leverage its current IS investments by defining some common harmonized IS architecture layers to enable *easy reuse*.

Standardizing HW/SW infrastructure and service providers is a necessity to control cost, but building a common language, common services, application & integration model will empower a company to easily manage its own knowledge & processes and provide top value to its customers.

By applying proper data standards, common integration patterns & integration services every company should build its specific Enterprise Integration Backbone.



Once the CIO or CEO of a company decides to build a global and efficient integration service, someone has to work out the best way to achieve this long-term goal.

That's what our t2b.EIBB.Methodology is about.

### Overview

t2b.EIBB.Methodology is a set of adaptable planning and data management tools, templates, checklists and best practices, that will help our customers to take the required steps towards a global integration backbone service in the most efficient manner.

We believe that's where IT consultant companies' added value should come from: understanding the potential business value of new technology and the vision behind it, we developed a method to easily & repeatedly implement it. Basically it is just about applying classic engineering concepts to IT.

The t2b.EIBB.Methodology is delivered by our EAI experts and consists of the following blocks that are described later in more detail.

- **t2b.EIBB.IS\_Architecture**  
what position has the integration backbone in the IS Architecture?
- **t2b.EIBB.Ramp Up**  
how to build a service that drives the integration backbone and allows the company to easily use it?
- **t2b.EIBB.IntegrationProjectMethod**  
how to define a structured cooperation between business application projects and the integration service?
- **t2b.EIBB.Repository**  
how to store & share all the information about the integration backbone?

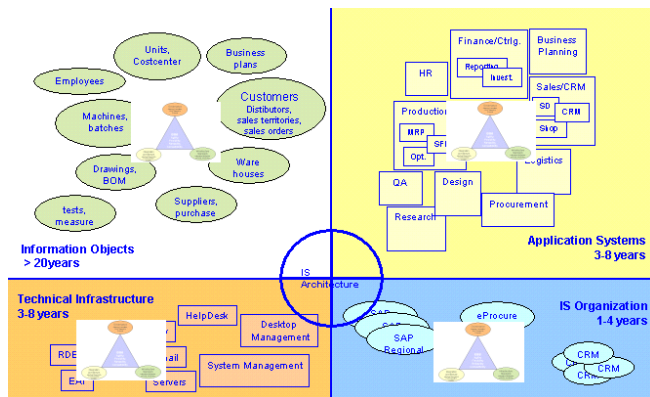
For a short overview of t2b.EIBB.methodology please consult the next pages. For specific questions you are invited to contact t2b's module responsible - or me.

Many thanks for you interest  
Patrick Toenz, CEO  
patrick.toenz@t2b.ch

## t2b.EIBB.IS\_Architecture

t2b's IS architecture blueprint defines the EIBB as one of the most strategic IS components.

In fact, data and processes are the most long living elements in every company's IS landscape. Instead of re-inventing the wheel with every new technology wave, architects need to define a long-term integration concept that builds the stable, but adaptable backbone for the company's information systems.



Building the backbone requires resources and time. Establishing the new concepts and the required organizational learning require personal engagement of opinion leaders within the enterprise. And because the backbone has to evolve, these investments never really stop.

Sometimes short-term business or application project goals are in contradiction to long-term architecture & integration backbone goals. It is important that all stakeholders in the company understand the priorities as defined by the corporate leadership team.

Therefore clear EIBB goals & priorities have to be included into the general IS Architecture Strategy that needs to be approved and fully supported by management & the CEO.

The resulting "integration charter" also serves to share the EIBB basic concepts and the management vision behind it with all business units in the organization.

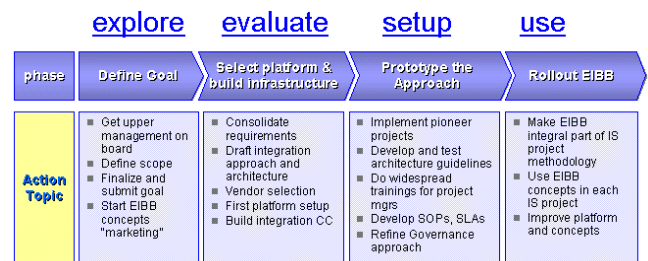
Contact: [patrick.toenz@t2b.ch](mailto:patrick.toenz@t2b.ch)

## t2b.EIBB.RampUp

Once it has been decided that a company wants to build an integration backbone, an operational project plan for this phase is required.

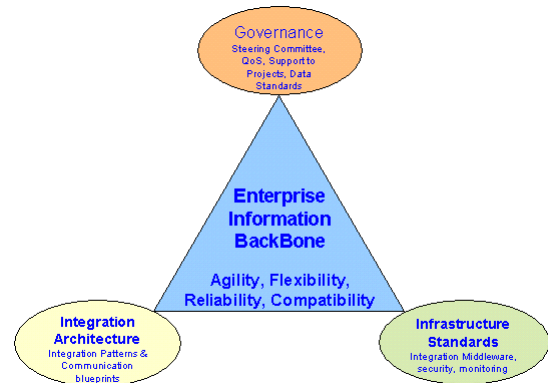
As building the EIBB is an organizational learning exercise as well, it will begin at different starting points depending on the company's experience with integration backbone concepts and integration technologies.

The 4 steps as displayed in the graph below have to be followed and will take ca. 6 months each for companies not yet in "EAI/SOA".



The t2b.EIBB.RampUp method provides a set of checklists, project plans and templates for most deliverables of each step.

At the very end of the RampUp phase the company will have created the EIBB: integration services provided by integration competence center(s) (ICC) that will use globally agreed standards and procedures.



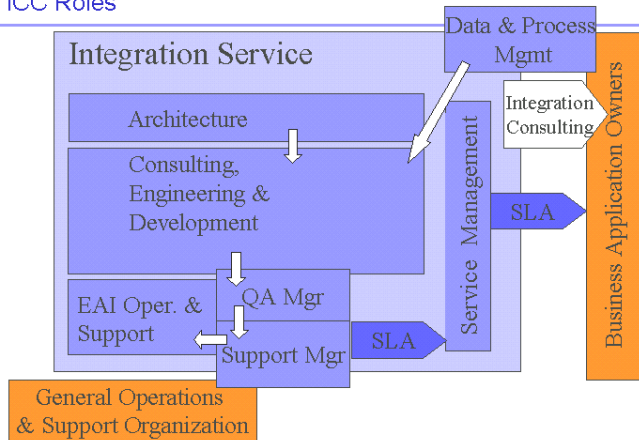
Our RampUp checklist contains 52 deliverables for the EIBB that are roughly grouped in the following areas: (see next page)

### Groups of RampUp Deliverables

- Service Management
- Architecture & concept marketing
- Organization Setup (internal processes)
- Integration Project Guideline (external processes)
- Development Guidelines
- Operations & Monitoring

Specialized integration staff is required in order to realize the integration backbone. Building integration competence centers is the most common approach. The graph below shows the typical roles and interactions in the ICC.

### ICC Roles



t2b.EIBB.RampUp method is a unique proposal – neither we nor our customers found anything comparable on the market.

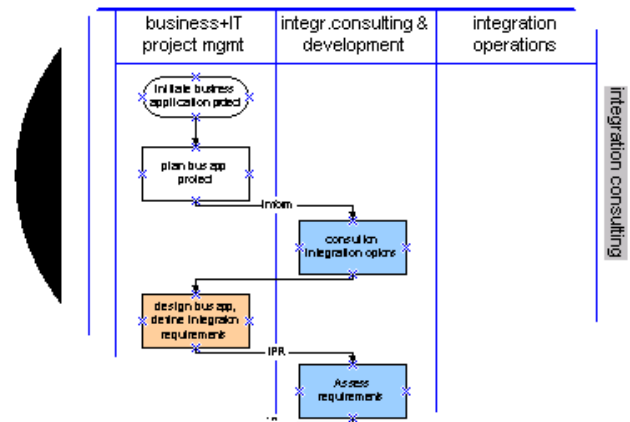
Contact: [marcel.grossert@t2b.ch](mailto:marcel.grossert@t2b.ch)

### t2b.EIBB.IntegrationProjectMethod

This component is a very important part of the EIBB “run” phase as it defines the relationship & work distribution between the integration service and the business application projects.

As this is the most often used & visible “connection” of the EIBB to the rest of the business and IT organization, the Integration Project Guideline document has to make the interaction model very clear – and also serve as an “internal marketing” instrument.

### Integration Project Development



Basically the t2b.EIBB.IPG is a very standard software development project method with “integration extensions”; the task responsibility assignments depend on the decisions taken for the organizational setup during the EIBB RampUp project, of course.

As such we suggest to customers to extend/adapt their standard application development method and use our IPG only as an example to detect the integration specific requirements. In case the customer desires, the t2b.EIBB.IPG can be used as is. It’s a completely self-contained integration project development method.

In this area also some EAI tool vendors start providing quite satisfying methods – written to support their specific product and sometimes also providing additional tool specific guidelines & templates.

We suggest taking the best from all sources and building the right IPG for the company from those blocks.

Contact: [marcel.grossert@t2b.ch](mailto:marcel.grossert@t2b.ch)

## t2b.EIBB.repository

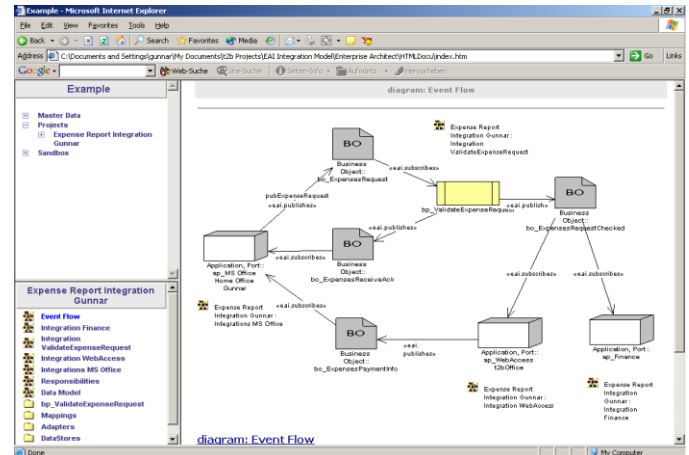
The **t2b.EIBB.repository** is designed to simplify the Meta data management in the area of integration & services and is delivered as part of EIBB consultancy.

It supports communication between business and technical project staff by linking business and technical models in the metadata repository, ensuring consistency across the whole integration backbone.

Basically every user in the enterprise is interested in the information available in the repository, such as:

- Which systems are connected to the EIBB?
- What data is available on the EIBB?
- Which services are available on the EIBB?
- What is the meaning of a data element?
- What is the data flow between systems?
- Who is in charge for a system/integration?

Standard queries & reports are provided as well via the UML-tools' reporting facility as with structured SQL-reporting against the RDBMS copy of the repository. The RDBMS repository and the UML repository are (2-way) synchronized with XMI.



The Web representation of the repository is very similar to the client/server screens and allows dynamic browsing.

t2b has built a feature-rich and easy to use package into the t2b.EIBB.repository – based on experiences with implementing several integration repositories in different UML and RDBMS tools for customers.

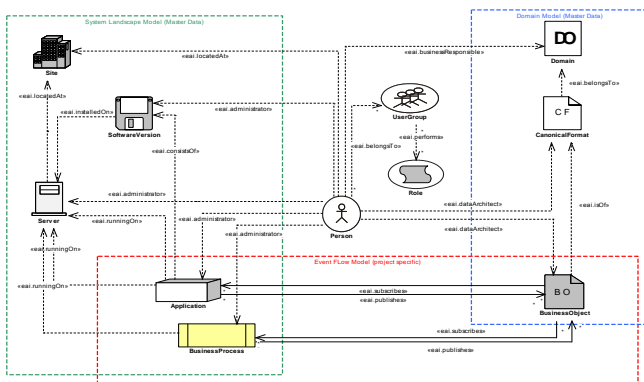
This model can be adapted/extended to customer requirements very easily.

T2b offers the following repository extensions in its t2b.EIBB.Workbench suite:

- EIBB Method Index (EMI)
- Integration Knowledge base (IKB)
- Integration Program-Planning & Management (IPPM)
- Integration Code Management (ICM)
- Integration Monitoring & Performance (IMP)

Please read the separate repository product flyer in order to get more details – or request a demo!

Contact: [Karoly.Csabi@t2b.ch](mailto:Karoly.Csabi@t2b.ch)



This data has to be captured during the specification phase of an integration project anyway. Storing it in a graphical, object oriented way is easy and adds tremendous value to the data - at close to no cost.

Whereas the UML tool-based GUI is mostly used by IT architects and integration competence center staff to enter data, the tool also generates a dynamic, easily browse-able Web version of the repository information.

This Web access to the repository allows the user to find the answers to questions like the above without any IT support.